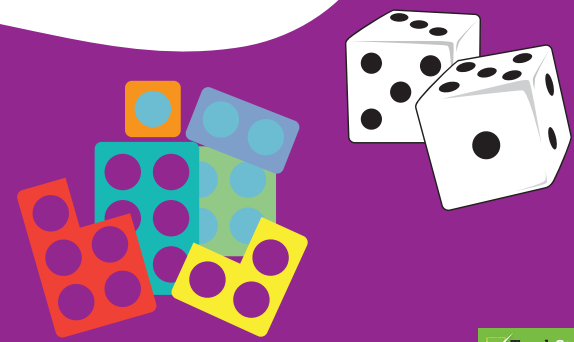
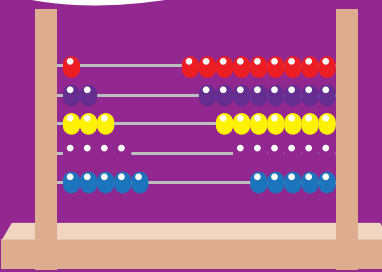


Division strategies

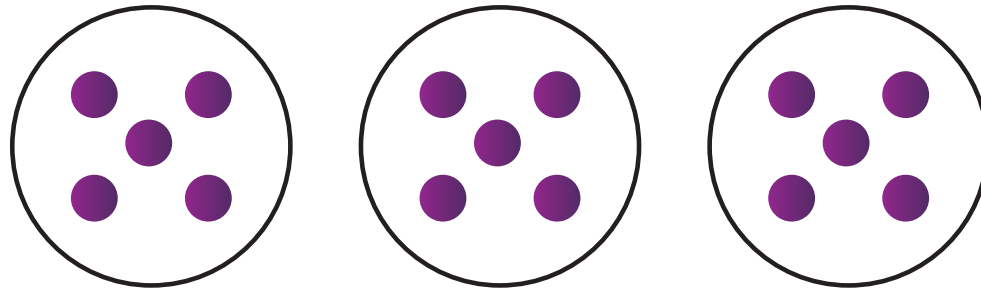


Equal Groups

Sharing into equal groups.

$$15 \div 3 = ?$$

Share 15 into 3 equal groups.



$$15 \div 3 = 5$$

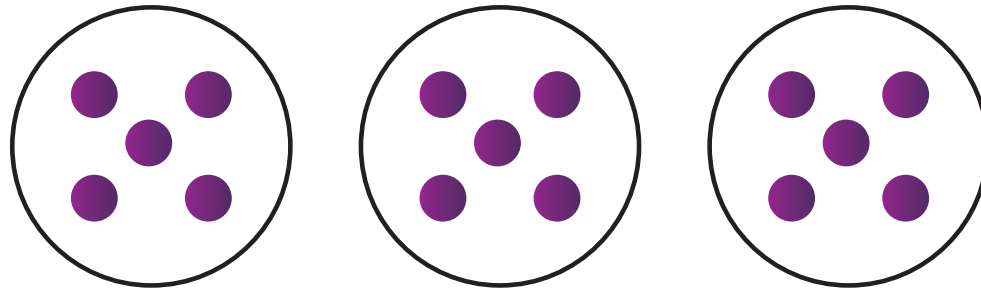


Partition

Sharing into equal groups.

$$15 \div 3 = ?$$

Share 15 into 3 equal groups.



$$15 \div 3 = 5$$



Fact Family

Change the division into a multiplication.

$$20 \div 4 = ?$$

$$(4 \times ? = 20)$$

Think 4 “whats” are 20.

5 fours are 20, so $20 \div 4$ is 5.

$$20 \div 4 = 5$$



Repeated Subtraction

Subtract the divisor until you get to 0.

$$12 \div 3 = ?$$

1. $12 - 3 = 9$
2. $9 - 3 = 6$
3. $6 - 3 = 3$
4. $3 - 3 = 0$

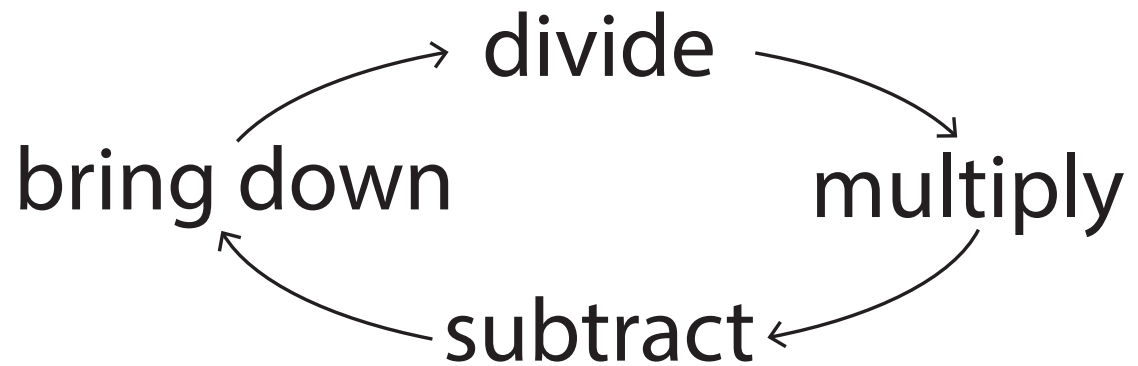
$$12 \div 3 = 4$$



Long Division

$$792 \div 6 = ?$$

$$\begin{array}{r} 132 \\ 6 \overline{) 792} \\ \underline{-6} \\ 19 \\ \underline{-18} \\ 12 \\ \underline{-12} \\ 0 \end{array}$$



$$792 \div 6 = 132$$



Short Division

$$756 \div 6 = ?$$

$$\begin{array}{r} 126 \\ 6 \overline{) 756} \end{array}$$

Steps:

1. $\frac{7}{6} = 1 \text{ r } 1$
2. $\frac{15}{6} = 2 \text{ r } 3$
3. $\frac{36}{6} = 6 \text{ r } 0$

$$756 \div 6 = 126$$

